



LOW-MED TRAFFIC

AVAILABLE UP TO 16' x 16'

Goff's G2 1800 Doors

The G2 1800 door is great for low to medium traffic areas, operating at 12-18"/sec, based on door size. The low profile design allows for placement in tight spaces.

- **12-18"/sec** based on size, up to 24 cycles/hour
- **Features NEMA1 Push Button Station**
- **Reflective Photo Eye Safety Sensor**
- **Ideal for your Low to Medium Traffic Areas**

6' x 9' door pictured with blue and no vision panels.



STANDARD FEATURES:

Full-Width Roll Cover

Auto-Reset After Impact

Full-Width Window

Auto-Close Door Timer

Replaceable Door Panels

Fiberglass Wind Bars



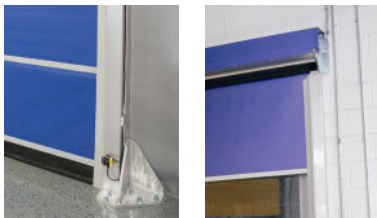
Goff's TMC Control System:

In-Tube motor **operates at 12-18"/second**, controlled by our Timer Motor Control System.

Timer Control System sets auto-close feature, maintaining climate control & contaminant prevention.

110 Volt Motor operating at 24 cycles per hour.

Options & Accessories

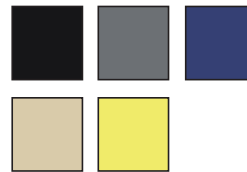


Available in Face Mount, Projection Mount, Under Header or Freestanding via Goff's Door Support Frame.



Wide range of safety sensor and control method options available on request.

26 oz Vinyl Colors: (standard)



Other custom colors available with extended lead times.

18oz Vinyl Colors: (standard)

