



Goff's Outdoor Curtain Walls

Simple Separation for your Outdoor & Windy Areas.

Durably designed & manufactured for exterior facility openings,
windy areas, and other harsh environments.

Protect your facility from wind, weather, and more!

Enclosing outdoor areas and exterior openings at your facility is an easy way to boost employee morale, protect equipment, and increase the profitability of your company. Outdoor Curtain Walls flexibly separates these harsh areas, providing an excellent and cost-effective alternative for permanently constructed walls.

Goff's Outdoor Curtain Walls are the ultimate solution to blocking out wind and weather when you need it.

Easily separate outdoor & exterior areas.

Goff's heavy duty curtains help block wind and weather conditions and have high resistance to both hot and cold temperatures. Easily close off those areas to control the temperature in your work area.

Pick flexible curtain walls over permanent construction.

Curtain walls are a great alternative to permanent construction, allowing you to let in preferred weather when possible, and block out harsher conditions when necessary. Protect your facility and boost morale, all while saving money over typical construction!

Flexible design made custom for your facility.

Supported by our modular track, our curtain wall systems can be reconfigured or added to later to continue optimizing your space, even as your business and facility change.



Mounting hardware is also available for increased flexibility & efficiency.

Goff's Outdoor Curtain Walls come delivered with track & hardware to fit your dimensions & layout, with the ability to be reconfigured as needed, providing smooth, easy movement of all curtain systems for years to come.

- **Track & hardware is built with durable heavy-duty 16 gauge galvanized steel.**
- **Goff's track & connector system** allows for multiple mounting methods including suspended, face, or floor.



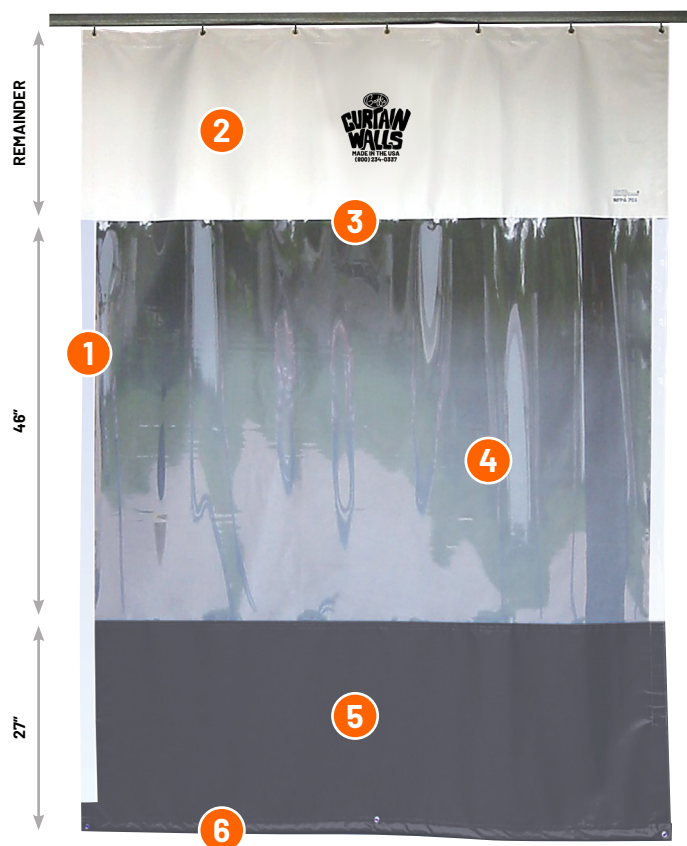
The Ultimate Outdoor Wall:

Goff's Outdoor Curtain Walls will block out wind and weather when closed to protect employees and machinery inside, boosting productivity, profitability and morale for your company. These curtains can be easily moved out of the way when it's time to move in large or bulky equipment.

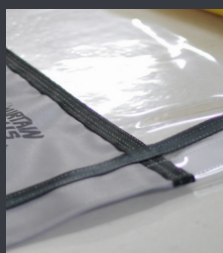
What you need, where you need it.

Goff's Outdoor Curtain Walls are manufactured in the USA. Our curtain wall system can be made up to 100' high in any width, and come standard with these premium features:

- 1. 2" industrial strength velcro sewn 6' up on both sides** to join together adjacent curtain walls.
- 2. Upper curtain panel provides a barrier** between your spaces for the remainder of the height.
- 3. All seams are double lock stitched**, maximizing the durability of your industrial curtain wall.
- 4. Clear window section maximizes lighting and visibility** for safety on both sides of the curtain.
- 5. Lower curtain panel provides a barrier** from window down to your floor to separate areas.
- 6. Chain weight sewn in lower pocket** keeps your curtain wall taut and straight.



Need extra support against wind and weather? Upgrade to our Super Exterior Curtain Wall to include:



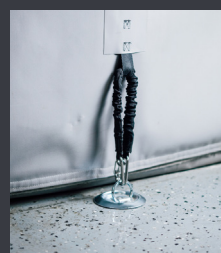
Nylon Webbing:

1" black reinforcement webbing double lock stitched approximately every 3' both vertically and horizontally for extra strength.



Velcro & Buttons:

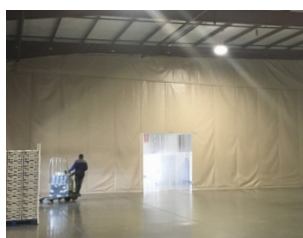
Include full length velcro and turn buttons on both sides of your curtain to ensure extra strength connection between curtain walls.



Wind Ties with Clip:

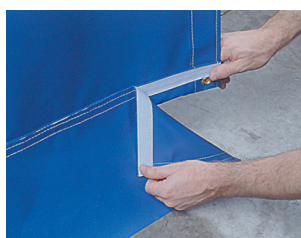
Keep your curtain in place & secure in outdoor and windy environments using the wind ties placed evenly along the bottom.

ADDITIONAL OPTIONS



Upper Valance Panel:

Create a seal between your hanging track and ceiling to maximize spatial separation. Great for sloped ceilings!



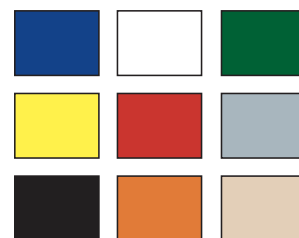
Floor Sweep:

6" replaceable vinyl piece to seal the gap between your curtain wall and your floor. Perfect for uneven floors!



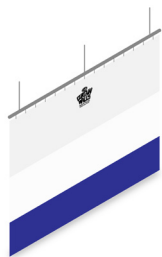
Strip Door:

Add an easy pass-through strip door within your curtain wall while maintaining separation, available in various sizes.



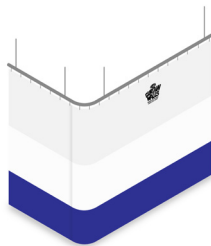
18 oz Vinyl Color Options:

Choose between our nine 18 oz color options to match your company's branding at no additional cost.



Single Curtain:

Use a single Outdoor Curtain Wall for instant lateral outdoor separation.



Two-Sided Curtain:

Create an L-shaped partition to segment off a corner of your building as separate space.



Three-Sided Curtain:

Add a 3 sided curtain wall to one of your permanent building walls to create a private room.



Four-Sided Curtain:

Build an entirely standalone room using a 4-sided curtain wall for exterior areas.

Easily Access your Separated Space:

Conveniently access your new space by combining Goff's Outdoor Curtain Walls with weatherproof high performance vinyl door line. Whether you're in and out of your space all day, or only need occasional access, we've got the solution you need to make the most of your facility for years to come, boosting efficiency of your workflows.



Goff's delivers more than you expected.

With over 30 years of experience, the Goff's team is committed to delivering the most reliable and innovative solutions to improve efficiency in your facility.

(800) 234-0337 | sales@goffscw.com

Easily Installed

Expert installation is available for rapid implementation, or included instructions can guide your team through our easy to set up system. Installation can be scheduled during down time for minimal facility interruption.

Guaranteed to Last

Every Goff's Outdoor Curtain Wall system comes with a 5 year warranty from failure in normal use due to defects in material/workmanship, and a lifetime warranty on all track, rollers and hardware.

Here to Help

The Goff's Customer Care & Tech Support team is available to answer any questions you have about your curtain wall system, making sure you get the most out of your investment at your facility.



700 Hickory Street, Pewaukee, WI 53072

Phone: 800-234-0337 | Fax: 800-959-0170

goffsenderprises.com | sales@goffscw.com

goffs_outdoorcurtainwall_productbrochure_1221.indd | Revised 11.2.21 | 1804

© 2021 Goff's Enterprises, Inc All Rights Reserved