

Intelligent Control System with Smart Touch Screen

Goff's Smart Touch Screen maximizes the safety & reliability of our Intelligent Control System powered doors. By accessing and displaying detailed system information, the Smart Touch Screen gives your team the information and control you need to maximize the ROI you get out of your Goff's High Performance Door System, reducing downtime in your facility.

Standard on our G2 5400, G2 4200, G2 2800, Clean Guard, Harsh Guard, and Wash Guard Elite Doors.

- **Easily operate your Goff's High Performance Door** using the on-screen open, close, and stop buttons.
- **On-display countdown timer** alerts users when the door is approaching the auto-close timer interval.
- **Get real-time insights on your door's safety and operation systems**, keeping you up and running.
- **NEMA4X rated touch screen** maximizes ease of use without compromising the moisture resistance of our Intelligent Control System.
- **Available in all voltage & phase inputs** ranging from 120V single phase to 480V three-phase.

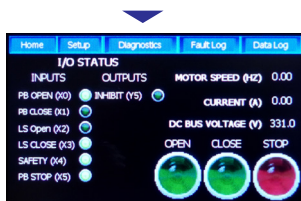


Real-time data from your Goff's doors:



Home Screen

Displays your auto-close timer countdown, as well as Open, Close, and Stop buttons for door functionality.



Diagnostics Screen

Increase facility safety by monitoring your door inputs and outputs, safety equipment, and more during setup or technical support calls. This screen will simplify safety checks and make sure your door systems are up and running, reducing downtime and lowering your cost of ownership.



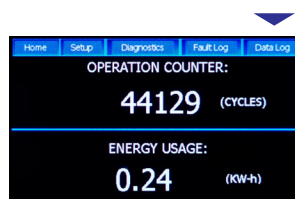
Fault Log Screen

Displays numbered fault code logs for detailed records on any failures in your door system for faster servicing.



Setup Screen

Used to specify how your door will function, set duration for the auto-close function, and more.



Data Log Screen

Keeps a detailed log of the door's total cycle count and total energy usage.