

More than you expected.

Goff's



## Door Control Systems

**Easy to start-up. Easier to use.**

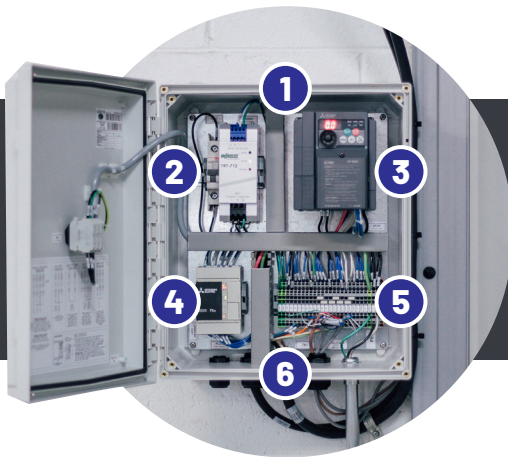
Goff's door control systems simplify door startup and operation right out of the box, featuring pre-wired control panels, easy motor termination, and future-proof features to keep you up and running longer.

# Intelligent Control System with Smart Touch Screen

Goff's advanced Intelligent Control System (ICS) features a programmable logic controller and variable frequency drive system in a pre-wired NEMA4X enclosure, featuring our Smart Touch Screen interface. This system maximizes your door's activation and safety capabilities to get the most out of your investment.

**Standard on our G2 5400, G2 4200, G2 2800, Clean Guard, Harsh Guard, and Wash Guard Elite Doors.**

- **Variable frequency drive** for smoother & more efficient motor operation, reducing temperatures and increasing durability.
- **Programmable logic controller** interprets a wide array of sensor & switch inputs to control the door.
- **Advanced timing & integration** capabilities allow door interlock, fire alarm safety activation, and more.
- **Ships pre-wired in a NEMA4X enclosure** to simplify installation and start-up procedures.
- **Available in all voltage & phase inputs** ranging from 120V single phase to 480V three-phase.
- **Comes standard with Smart Touch Screen.**



1. NEMA4X Enclosure protects your electronics regardless of environment.
2. Dedicated isolated power supply & circuit breaker to protect ICS logic computer.
3. VFD maximizes motor efficiency through variable up/down speeds during motion.
4. Fully programmable logic controller can integrate for advanced functionality.
5. Pre-wired and labeled terminals simplify installation & sensor/switch additions.
6. 13' Supply cable comes attached and ready with quick connects at motor terminals.

## Smart Touch Screen

The ultimate safety solution for your Goff's High Performance Door. This innovative system:

- **Enables touch screen door activation**
- **Monitors system safety status & fault codes**
- **Displays auto-close timer countdown**
- **Simplifies maintenance to reduce downtime**



# Relay Control System

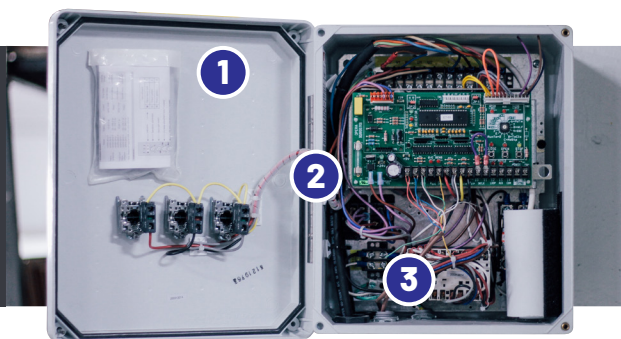
Goff's basic Relay Control System (RCS) features a relay logic board in a NEMA4X enclosure to interpret sensor and switch signals and control your door. This system is compatible with several voltage options and features a programmable auto-close timer (up to 4 minutes) to fit the application at your facility.



## Standard on our Model 2000 & Wash Guard Plus Doors.

- **Operates the direct drive motor** utilizing the Open, Close, and Stop buttons on the face of the box.
- **Easily adjustable auto-close timer** in 1, 5, or 15 second intervals, up to 4 minutes total.
- **Ships pre-wired in a NEMA4X enclosure** to minimize simplify installation and start-up procedures.
- **Available in a variety of voltage & phase inputs** ranging from 120V single phase to 460V three-phase.

1. Every Relay Control System ships pre-wired and includes a wiring diagram on the inner door panel for future addition of sensors or timing adjustments.
2. NEMA4X Enclosure keeps your system electronics free from dust, debris, or moisture to make sure that your door stays up and running.
3. Our control systems ship with 13' motor cables wired to the panel. Simply run the cables up to your motor, terminate connections, and you're ready to go!



## BOTH SYSTEMS ACCOMMODATE OUR PREMIUM SAFETY OPTIONS:



### Photo Eye Sensor

Single point safety beam that reverses or stops door if interrupted.



### Light Curtain Sensor

42" or 72" high safety beam for increased safety and impact prevention.



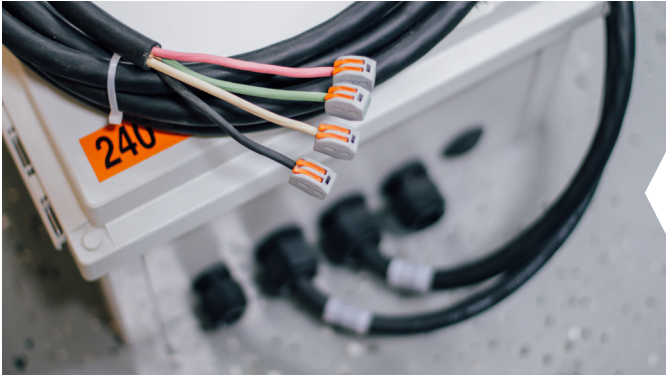
### Motion/Presence Sensor

Awareness of motion and presence at the door for easy opening & impact prevention.



### Wave to Open

Touch-free operation of any Goff's control system for convenience & safety.



**GOFF'S ADVANTAGE:**

**Pre-Wired with Quick Connects**

To simplify installation, all Goff's Control Systems come pre-wired at the control box, and feature quick connects for each termination at the motor. Labeled sensor inputs on the control box remove the guesswork of complicated installs to save time & minimize downtime.


	Relay Control System	Intelligent Control System
Pre-Wired for Easy Installation	YES	YES
NEMA4X Enclosure	YES	YES
Input Voltage Compatibility	120V1P, 230V3P, 460V3P	120V1P, 208V1P, 230V3P, 480V3P
Auto-Close Timer Options	1 or 15 sec interval, 4 minute max	Custom Timer Programming
Interlock Capability	YES	YES
Advanced Facility Integration	-	YES
Custom Programming	-	YES
Door Compatibility	Model 2000, Wash Guard Plus	G2 5400, G2 4200, G2 2800, Harsh Guard, Clean Guard, Wash Guard Elite

**Goff's delivers more than you expected.**

With over 30 years of experience, the Goff's team is committed to delivering the most reliable and innovative solutions to improve efficiency in your facility.

**(800) 234-0337 | [sales@goffscw.com](mailto:sales@goffscw.com)**



 700 Hickory Street, Pewaukee, WI 53072  
 Phone: 800-234-0337 | Fax: 800-959-0170  
**MADE IN USA** [goffsenderprises.com](http://goffsenderprises.com) | [sales@goffscw.com](mailto:sales@goffscw.com)