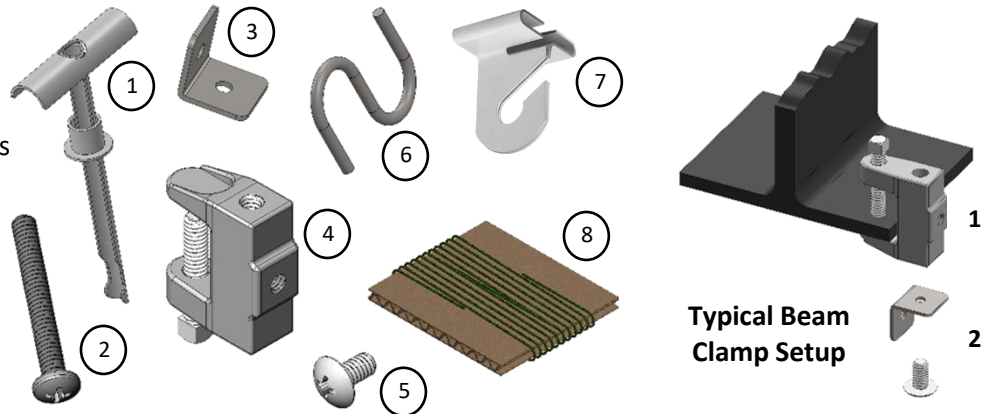


## Personal Safety Partition Installation Instructions

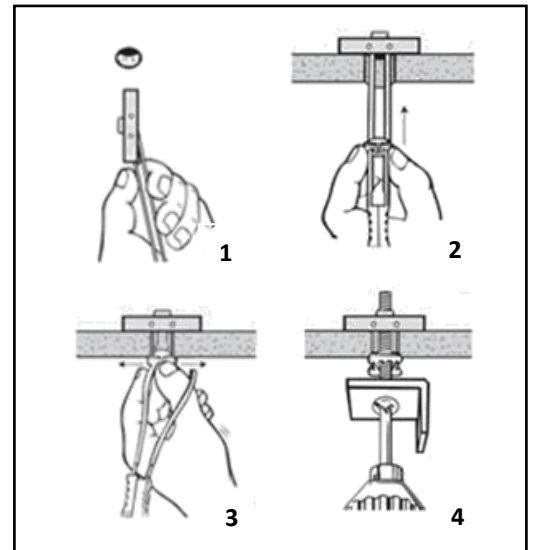
### Components included in this Kit:

1. (2) Universal Anchors
2. (2) ¼" Screws (long)
3. (2) Mounting Angle Brackets
4. (2) Beam Clamps
5. (2) ¼" Screws (Short)
6. (4) "S" Hooks
7. (2) Ceiling Tile Rail Hooks
8. (2) 16' Braided Hanger Line
9. (1) Clear Curtain Assembly



### Installing the Ceiling/Hanging Hardware

- A. To use the Drywall/Ceiling Anchor:
  1. Drill a ½" hole into a ceiling tile or drywall ceiling. Fold the metal wing of the anchor back, then push through the ½" hole.
  2. Slide the plastic ferrule into the hole until it seats against the surface.
  3. Snap off the plastic stud.
  4. Insert the angle brackets onto the screw and thread the screw fully into the ceiling anchor.
- B. To use the Beam Clamp for mounting:
  1. Tighten the clamp screw against the beam flange.
  2. Attach angle to beam clamp with the short screw.
- C. Now measure over the same distance(s) as between the hang holes on the top mount rail on your curtain assembly and repeat this process as many times for each hole.



### Assembling the Partition

- A. Insert an "S" Hook through Mounting Angle Brackets.
- B. Insert an "S" Hook through Curtain Rail holes.
- C. Hook a loop of the Hanger Line onto each "S" Hook.
- D. We also suggest that the "S" Hooks be crimped closed.

**NOTE: The supplied mount hardware is intended for drop ceilings, drywall, or beam style ceilings. If your ceiling is not one of these typical types, you may need to provide additional hardware. Seek the help of a professional or contact Goff's Technical Support at the number above.**

