



READ THIS MANUAL CAREFULLY. OBSERVE WARNINGS AND PRACTICE CAUTION WHEN INSTALLING, OPERATING, OR MAINTAINING YOUR GOFF'S PRODUCT.

MANUAL BI-PARTING SIDE SEAL – BUG BLOCKING MESH/VINYL CURTAIN INSTALLATION INSTRUCTIONS

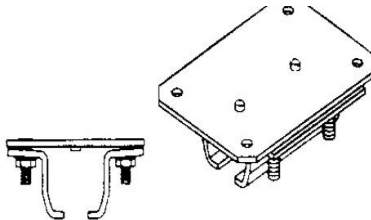
Unpacking and Inspection

Please unpack your unit carefully and notify the factory immediately if there are any shortages or if any items have been damaged during transit. Your kit(s) should have all the necessary hardware and components for a complete installation with the following exceptions (installer-provided hardware):

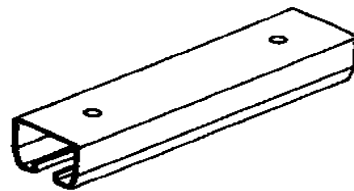
1. Mounting hardware for securing the ceiling flush mounts and track to the building or support structures.

Assembly and Mounting

1. Fasten the track splices to the underside of your door frame header using appropriate “best practices” fasteners for your building material. One track splice is typically mounted in the center of the door opening and the other two are mounted approximately 4” (four inches) from either end. Wide door openings may require additional splices and different spacing. Doors narrower than 8’ (eight feet) typically do not require a center splice. Make sure that the splices are all in a straight line across the underside of the header and that there is a splice located at all track junctions.



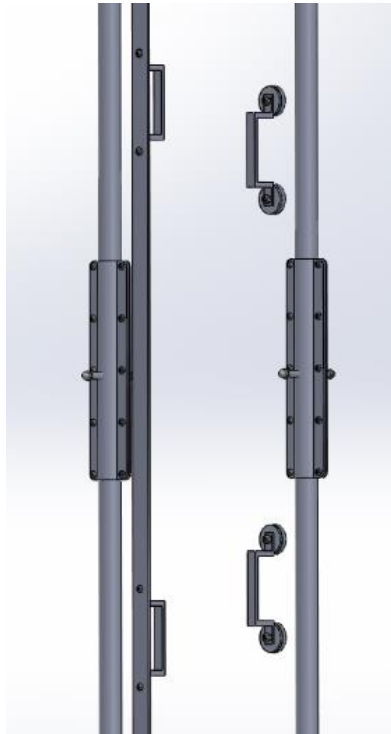
Track Splice



Track

2. Loosen and/or remove the nuts from one half of the track splices and install one track section. Make sure that the track sits squarely in the splices and that the end of the track sections is butted firmly against the inside door jamb. Reinstall and tighten the splice clamp nuts.

3. Install the roller hooks into the mounted track section. Mount the remaining track sections using the same method as the first. If your doorframe is not exactly the specified dimension you may have too much track. If you have too much it will be necessary to cut some length from one end of one-track section.
4. Next, hang the mesh/vinyl curtains by installing the roller hooks through the grommets at the top of the curtain. Using a pair of pliers, crimp the hook at the top of the fiberglass stiffener pocket to ensure that wheel assembly does not become unhooked from the curtain (optional).
 - NOTE: The handles for operating the opening should be on the right half of the split no matter which side of the curtain you are on (front or back). See picture below (material not shown). For reference the logo on the curtain should face the outside of the building or opening.



5. The next task is drilling floor holes for the cam-locks. The best way to do this is by starting at the cam-locks at the middle/bi-part of the two curtains. Always make sure the material is taut, without overcoming the hold between the magnets. Start by marking the center of the opening. Then connect the magnets from one panel, to the metal insert in the other at middle of the opening. Pull the material taut and mark where the inner-most cam locks will land. Make sure the cam locks are equally spaced from your opening center-mark. Continue to work outwards, always taking up any excess slack. After all cam locks from both halves are marked, drilled and set in place, take up all remaining slack and secure the side grommets to the face around the opening with the best fasteners for your application.
 - a. Included in your order are screws, as well as plastic anchors. If you are mounting into concrete, use the provided screws AND anchors to secure the curtains to the wall. If you are mounting into wood, use just the screws.

6. Be sure to install the tie-back strap at a convenient height using one of the grommet hole locations in the curtain. The tie-back straps will be “sandwiched” between the curtain and the door jamb.

7. Lastly, attach the valance panel to the building fascia using the self-tapping screws with rubber washers provided. Slide the fasteners through the grommet holes at the top of the valance and secure the valance 2”-4” (two to four inches) above the top of the door opening header. Center the valance in the opening which should provide approximately a 3” (three inch) overlap on both sides. If the building fascia is brick, the blue plastic anchors can be used in conjunction with the self-tapping screws.

LIMITED WARRANTY

Side Seal – Bug Blocking Vinyl and Mesh Curtain Assemblies

Goff’s Enterprises, Inc warrants components and parts for two (2) years and will cover labor up to one (1) year after the shipment date from the factory.

